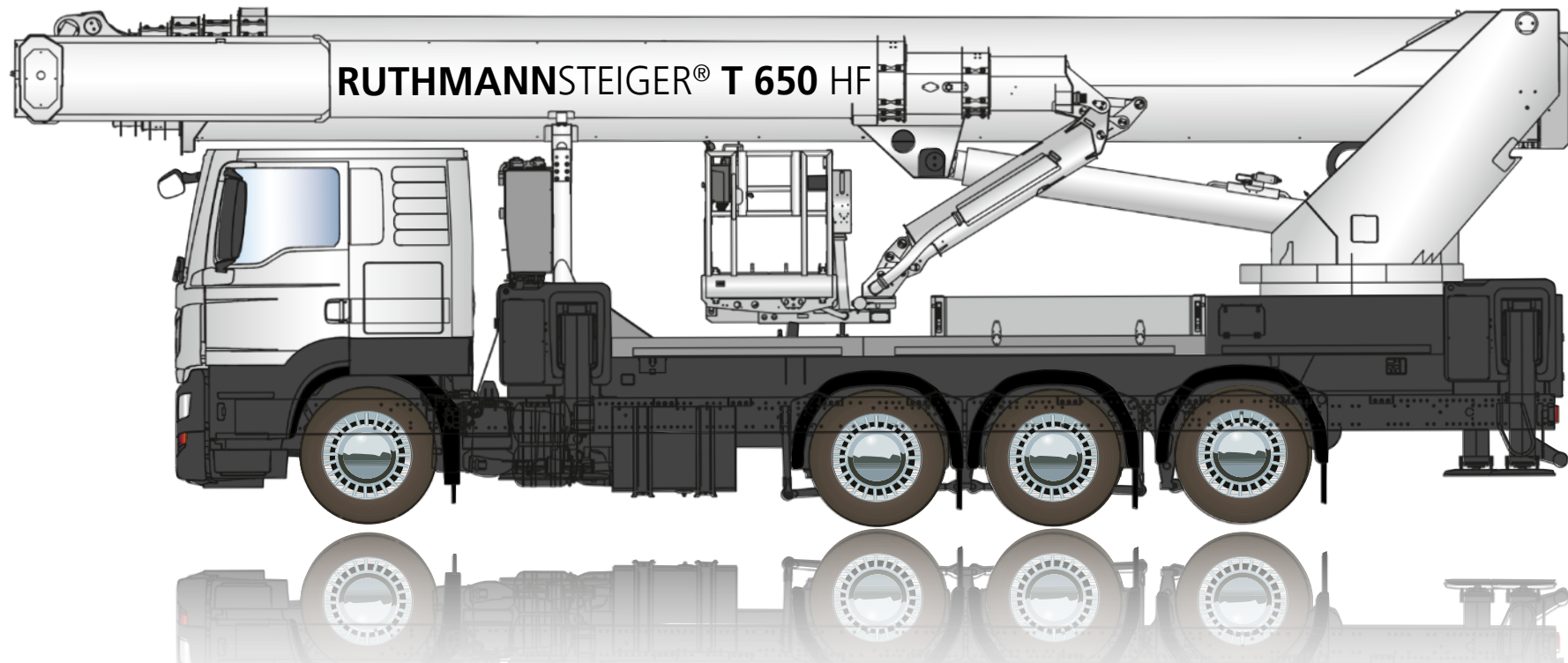
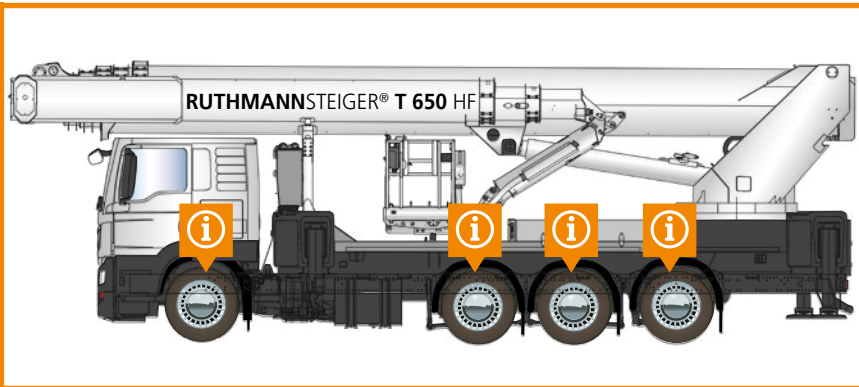


# STEIGER® T 650 HF



**EVOLUTION in the class > 60 m!**  
**Outreach world champion: 43 m!**



Extension of the performance data range  
on 4 axes with < 12 m total length

## PERFORMANCE DATA\*



65 m working height → 2 m MORE



43 m Reichweite → 4 m MORE  
World record in this class



2° inclination

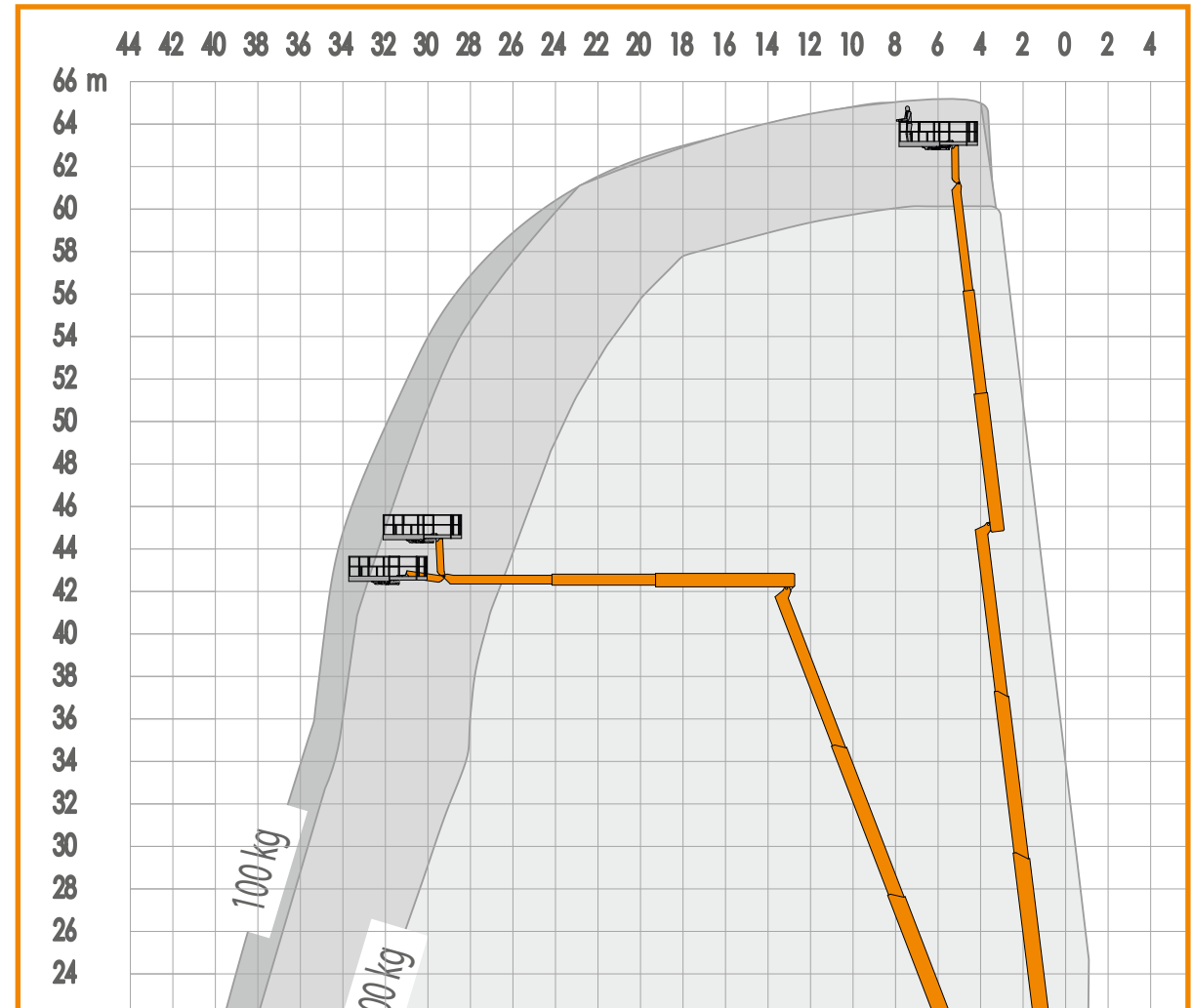


Total length only 11.99 m



83° angle of elevation → 2° MORE

\*depending on mounts and features





Significantly **MORE** flexibility in use  
with the **highflexRÜSSEL®** (jib)



## 220°

True angle of the RÜSSEL®'s (jib) due to  
optimized articulating telescopic basket

**+ 10° MORE**



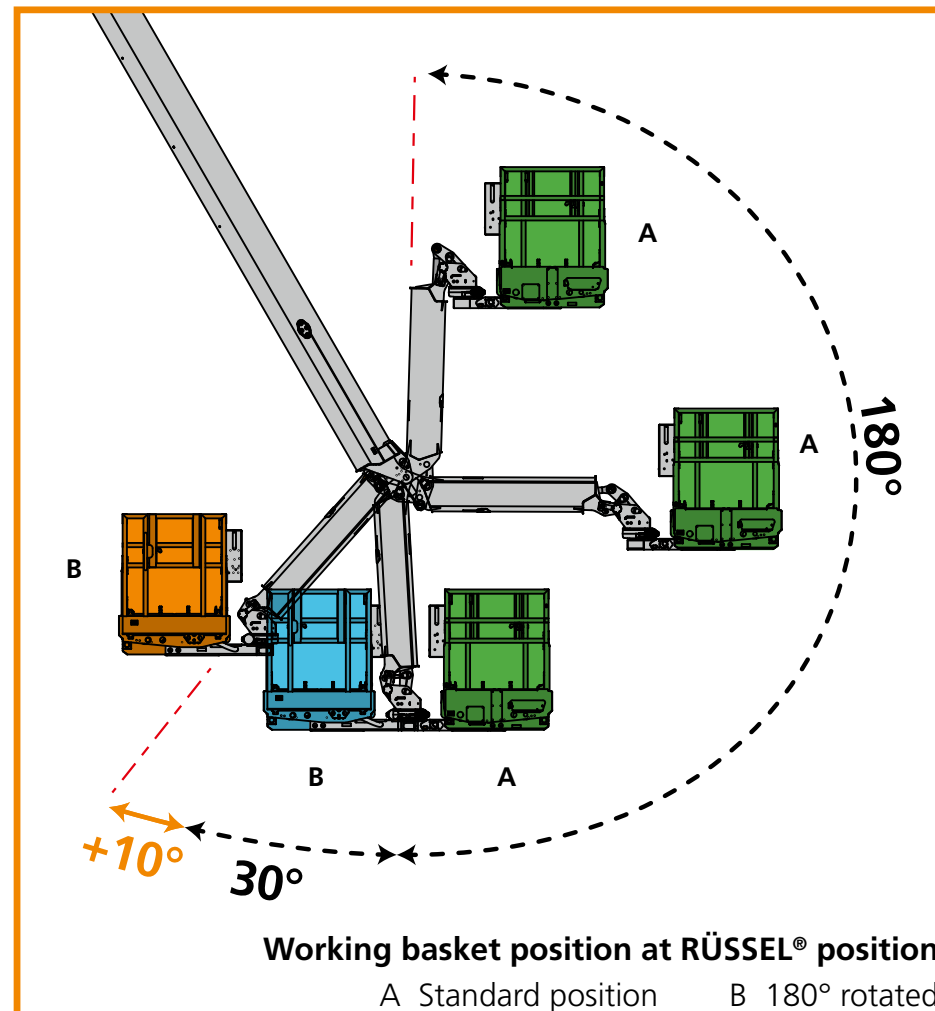
**2.0 m RÜSSEL®-length (jib)**  
therefore 6 m object flexibility

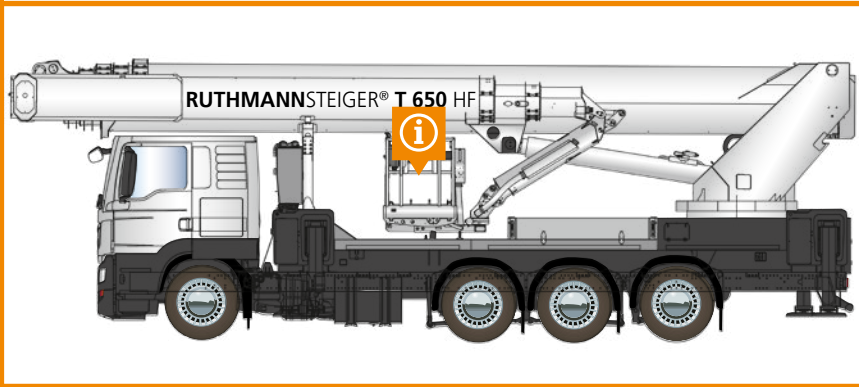


**40° MORE RÜSSEL® (jib) rotation**  
compared to T 630



**'Standing' working basket**  
perfect for 'under and up' as well  
as all possibilities of 'up and over  
and back' during lowered  
RÜSSEL®





**i** MORE flexibility in use with the **highflex** working basket

**+** **440°**  
MAXIMUM BASKET ROTATION ANGLE

**+** 2 x 220° working basket rotation  
**+** 40° MORE

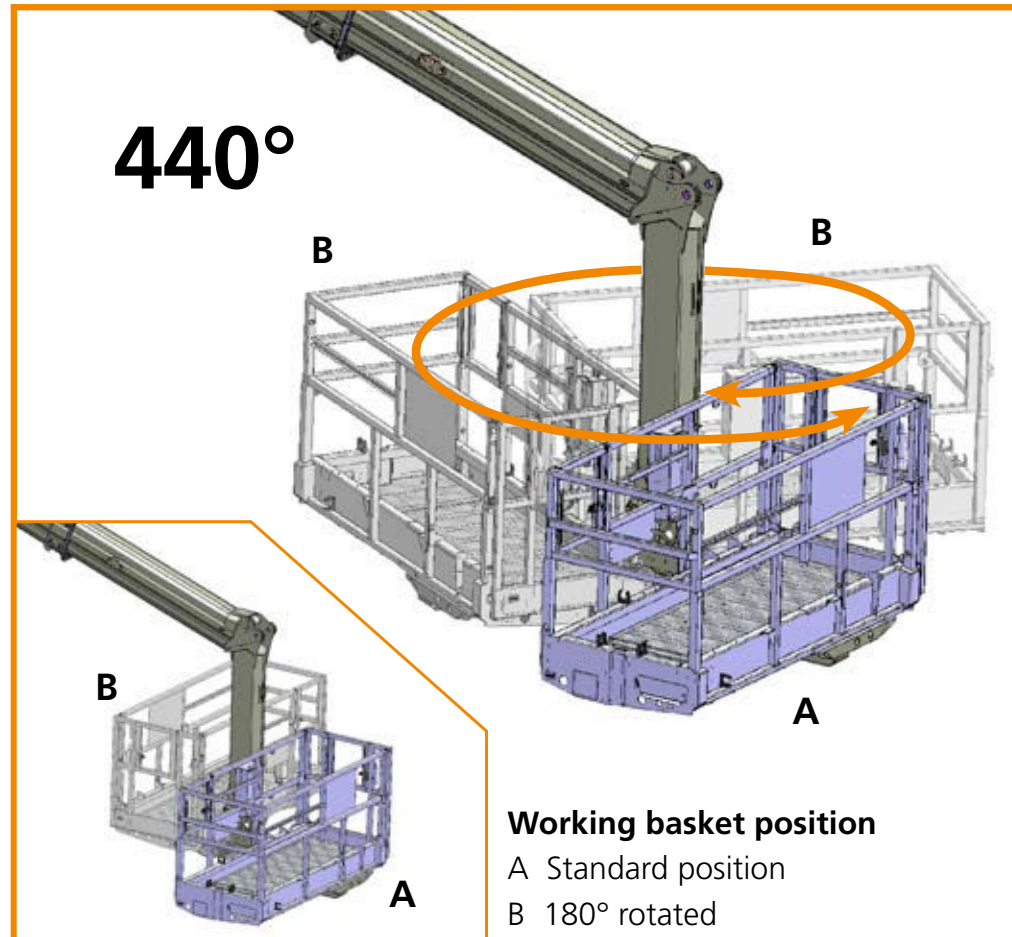
**+** Perfect for 'up and over and back'  
to work perfectly from the rear side of objects

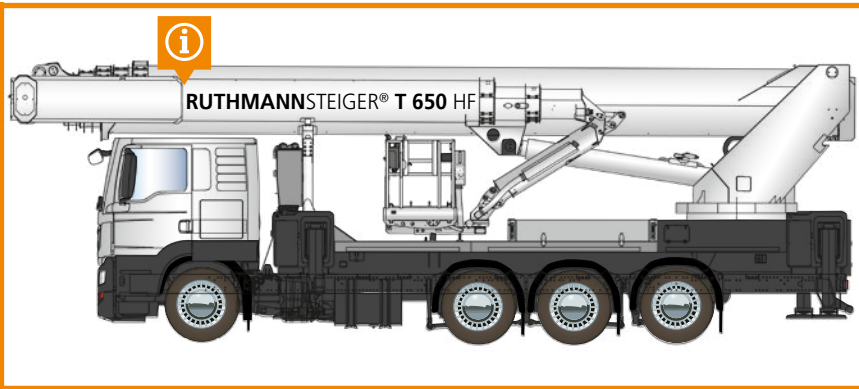
**+** Biggest working basket available  
on the market  
3.82 x 0.97 m fully telescoped

**+** 600 kg working basket load

**+** Few interference factors under  
working basket

**+** All positions also reachable with  
extended working basket





Once again **the upper boom length** has been increased for even more outreach in the elevated direction

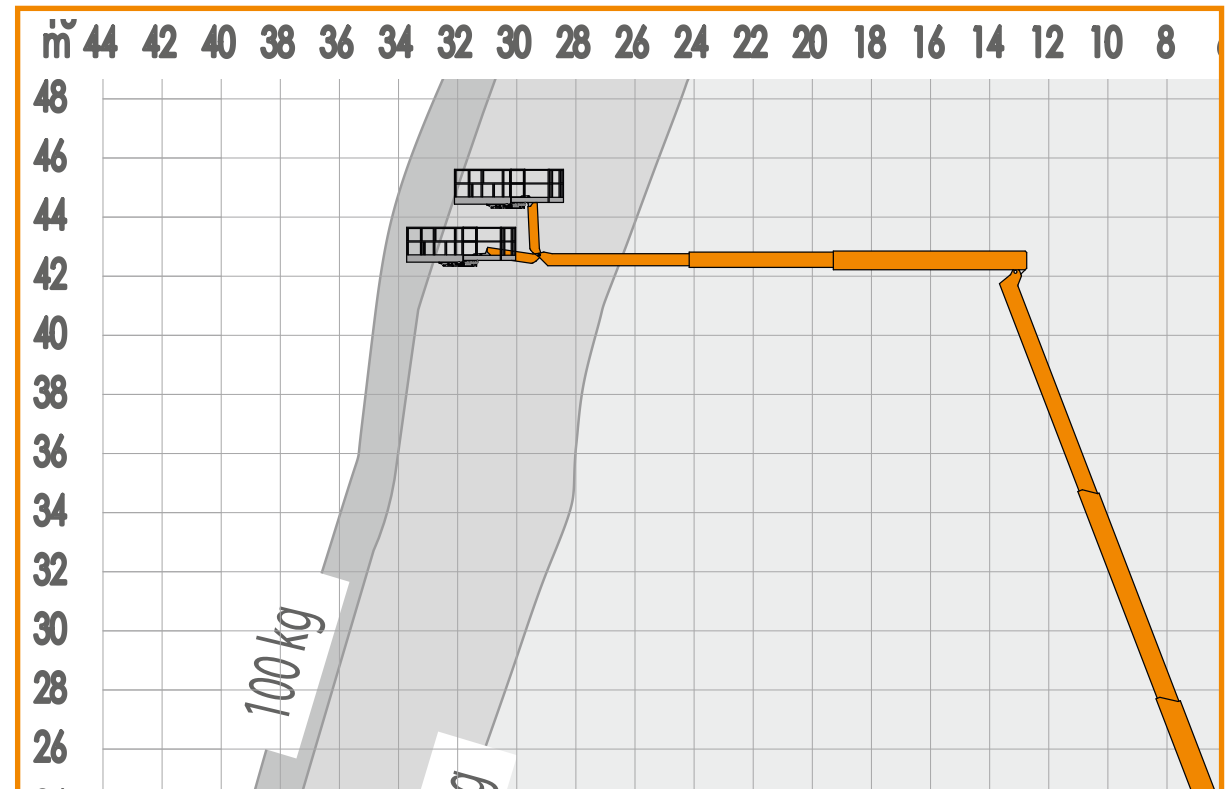


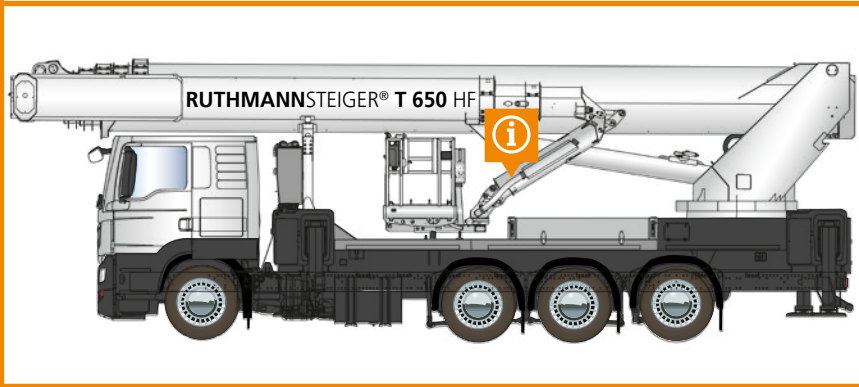
## 21.05 m

TOTAL HORIZONTAL RANGE OF  
THE UPPER BOOM



still + 1.45 m more  
against T 630





**i** still MORE **UNDERGROUND** power

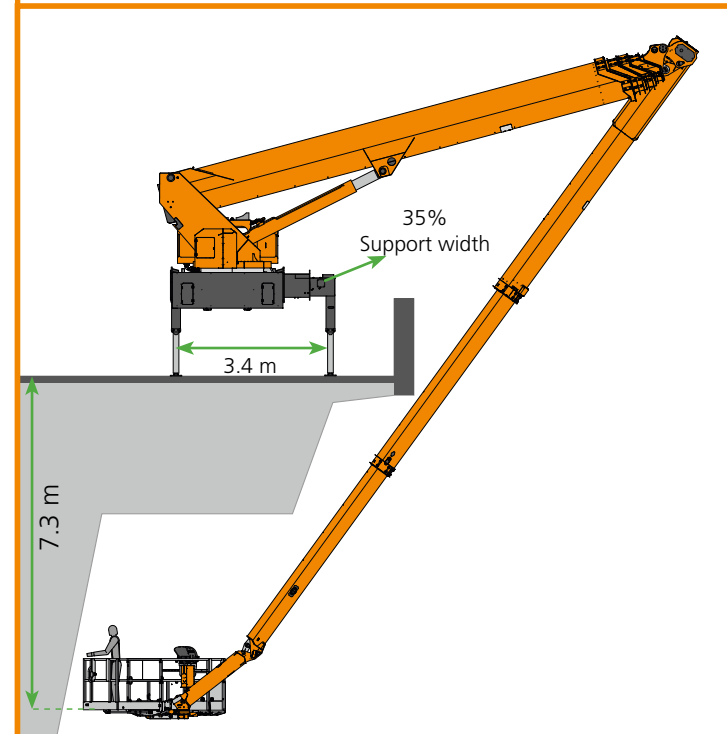
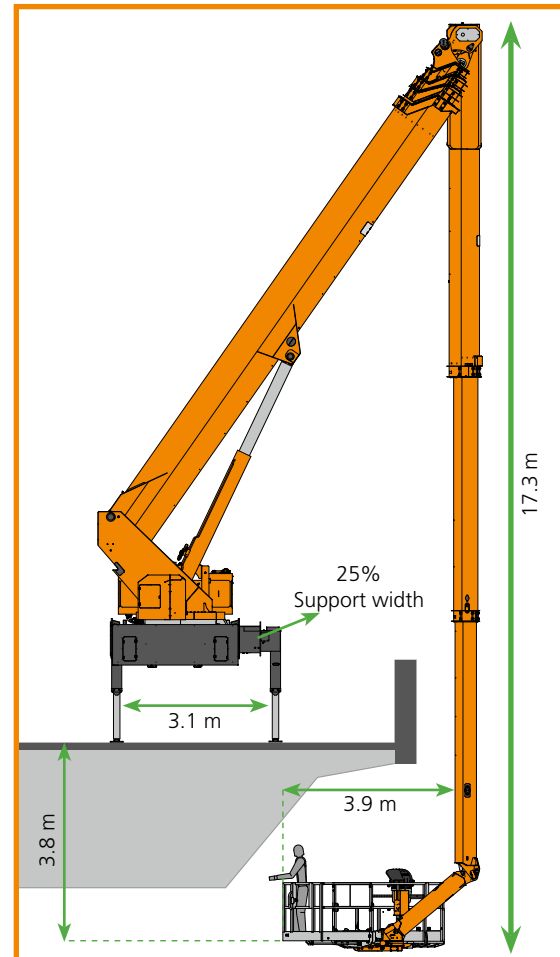
**+** **14.5 m**

Total underground 'working depth'

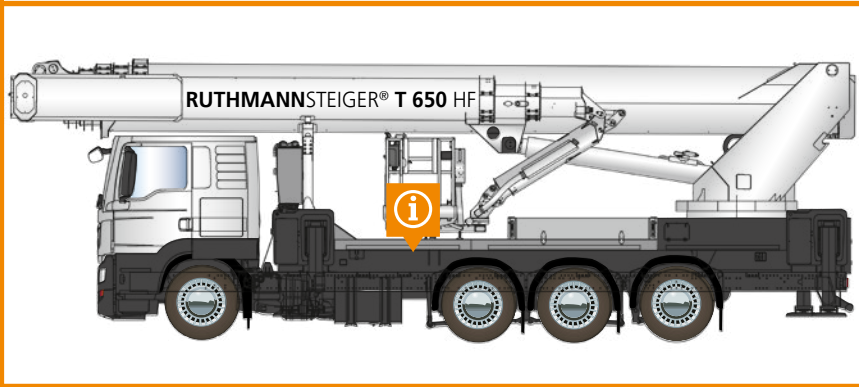
**+** + 2.5 m even more than the T 630

**+** Extremely dynamic as 440° basket rotation angle

**+** brings the basket up to 1.2 m closer to the object than any comparable competitor's offer ('standing' working basket)







**MORE chassis selection is not possible!**  
We meet (almost) all your wishes!

## CHASSIS SELECTION POSSIBILITIES



All major brands



Drive: 8x2, 8x4, 8x6, 8x8



Standard or long driver's cabin



**IVECO**  
**DAF**

**MAN**  




**SCANIA**



Mercedes-Benz

only exemplary illustrations of brands and chassis variants

## STEIGER® T 650 HF



 Even MORE HEIGHT performance features and benefits



### DIVERSE DRIVING POSITIONS FOR THE SUPPORTS

Working basket – vehicle rear (left + right) – Second control



### COCKPIT (control unit in the working basket)



Component equality in comparison to other models brings SURPLUS value with



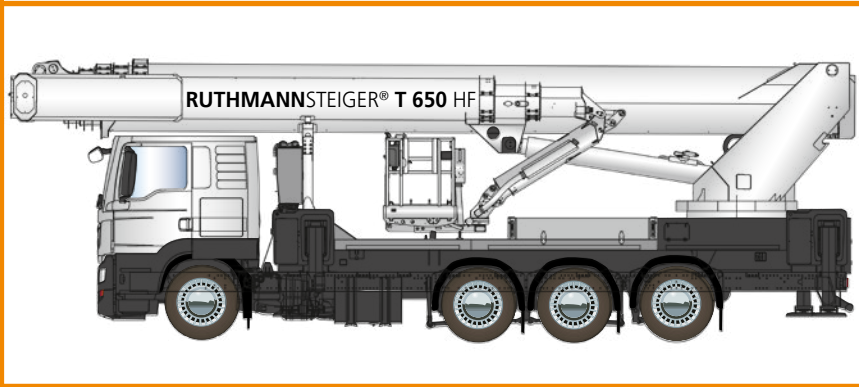
Service/maintenance



Supply of spare parts and availability





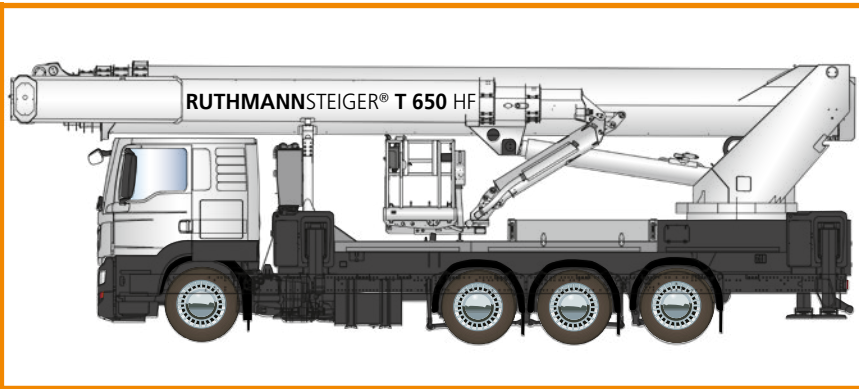





MORE possibilities with the  
**special features HEIGHT**  
performance

## HERE SOME EXAMPLES:

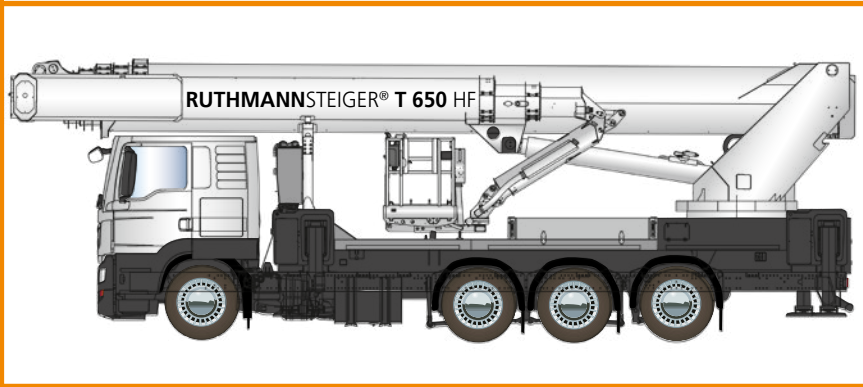
- + Hybrid drive
- + Ambient lighting
- + Folding seat
- + Camera basket
- + Lift-up system
- + Material winch
- + Diverse heating systems in the working basket
- + hyCLEANER adaption
- + Underlay plates for supports
- + Box structures on load area
- + and much, much more!





-  **A GREATER** number of reference customers in the segment of large appliances – latest technology – cannot be found anywhere else
-  **More than 200 HEIGHT** performance-units since 2012
-  **Guarantor** for worldwide proven technology in day-to-day use





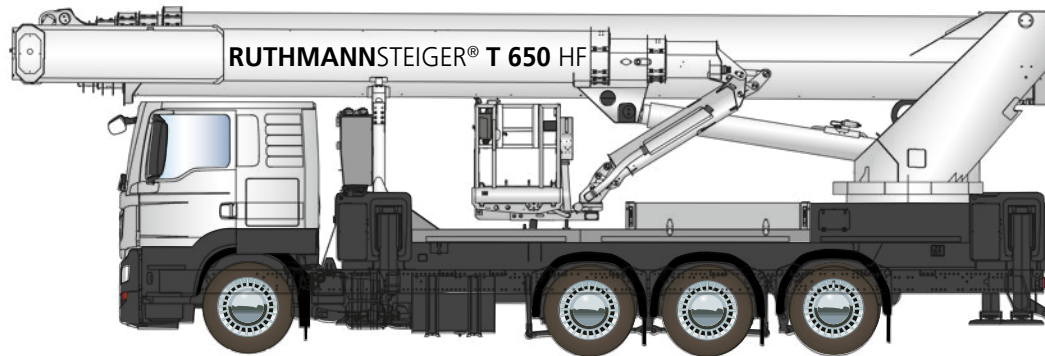
Consistent continuation of innovative HEIGHT performance-series

## REVOLUTION

**RUTHMANN's** EVOLUTION =

Reaching product innovations by creative ideas  
and experience – characterized by onward  
development with  
SURPLUS value

# The **REVOLUTION** in the 60 m class!



## Benefits Overview

- World record performance data
- 65 m working height
- 43 m outreach
- On 4-axes-chassis
- New highflexRÜSSEL® -> 220° Range of motion
- New highflex working basket -> 440° swivelling area
- Further extended upper boom
- Multi-chassis possibilities: Brands, driver's cabin variants and drive types (8x2, 8x4, 8x6 or 8x8)
- Current control and operating technology (COCKPIT)
- Comprehensive optional special features
- A great number of national and international references

# STEIGER® **T 650** HF

## Ruthmann GmbH & Co. KG

Von-Braun-Straße 4  
48712 Gescher-Hochmoor  
GERMANY

Phone: +49 2863 204-0  
Fax: +49 2863 204-212

Internet: [www.ruthmann.de](http://www.ruthmann.de)  
E-mail: [export@ruthmann.de](mailto:export@ruthmann.de)