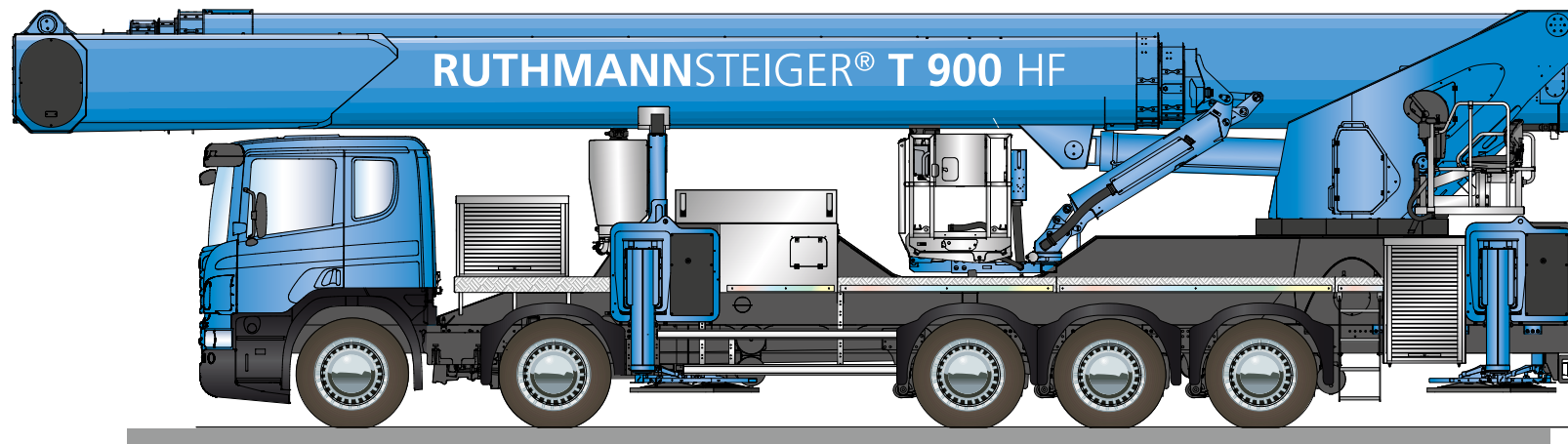


SKY performance STEIGER® T 900 HF



**A quantum leap in the 90-m working height category
by RUTHMANN's patented, state-of-the art Dynamic Reach System (DRS)
and its revolutionary "dual concept" design**

Maximum performance

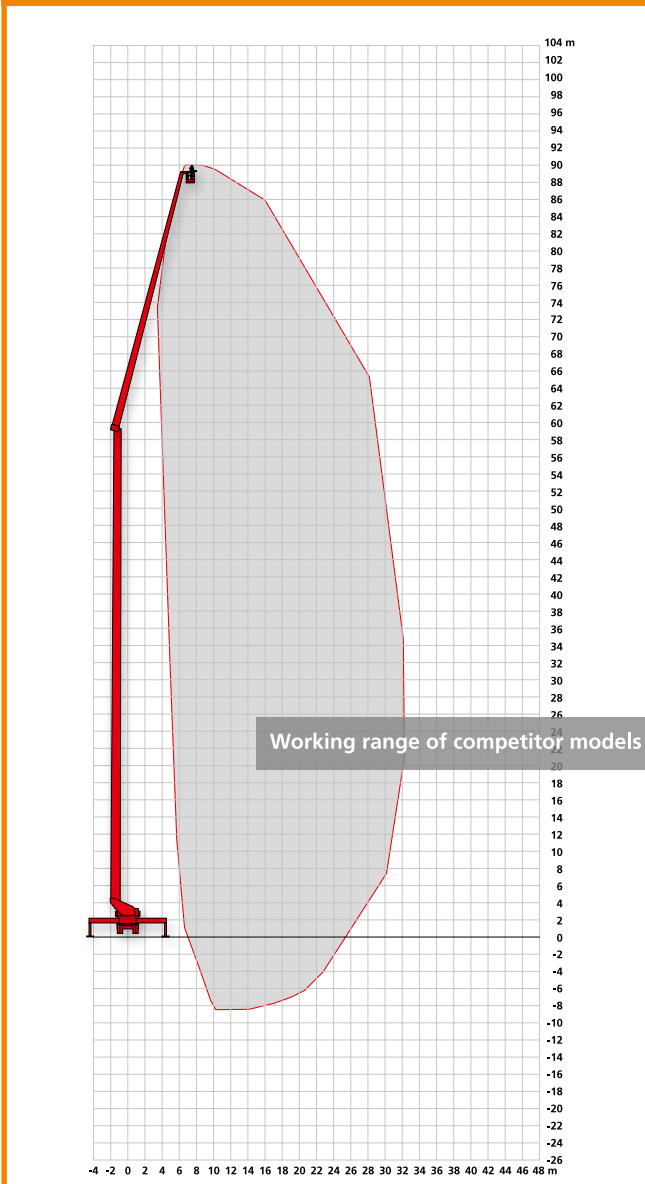
WITH PATENTED DRS AND
GROUNDBREAKING DUAL CONCEPT 

UNIQUE: World's most versatile large-scale truck-mounted aerial work platform

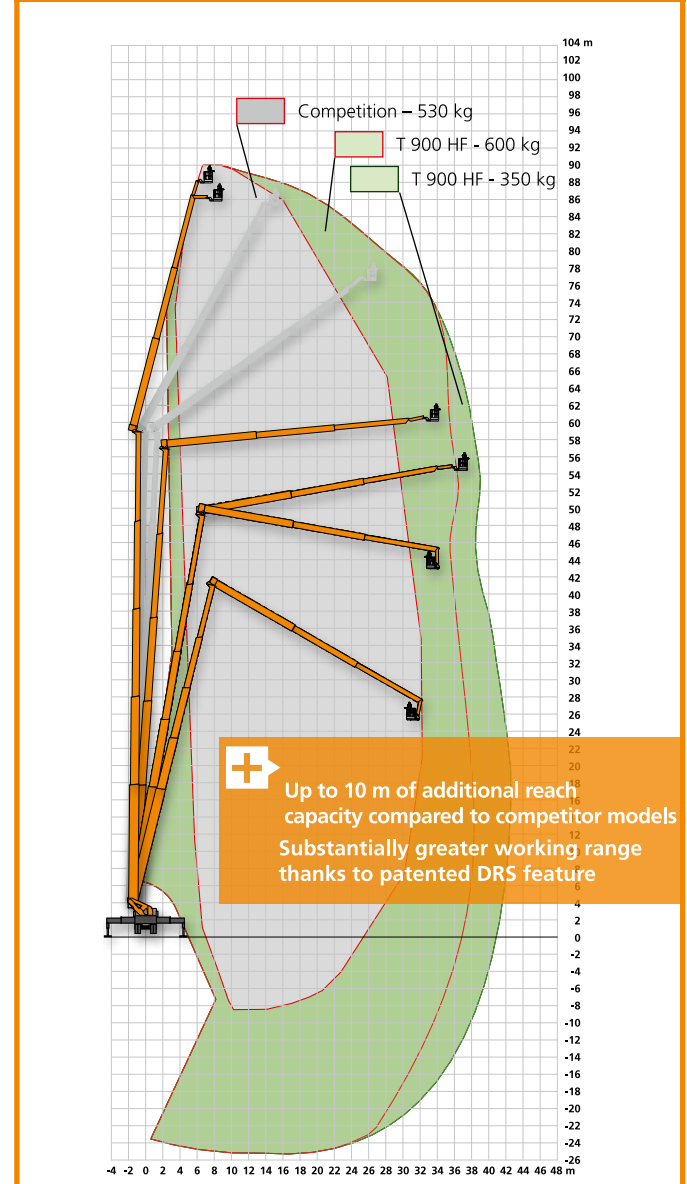
 **Unparalleled application possibilities**

- A** The T 900 HF meets all of the standards of previous large-scale models in the 90-m category
- B** There is also a significant increase in reach capacity compared to competitor models:
- +** Through variable set-up and automatic locking of lower boom with an 80° to 90° boom elevation angle

A Working range of competitor models at maximum height



B RUTHMANN's ADDITIONAL BENEFITS: Enhanced working range through patented DRS



REVOLUTIONARY "DUAL CONCEPT" DESIGN

WITH PATENDEED DRS
(= Dynamic Reach System)







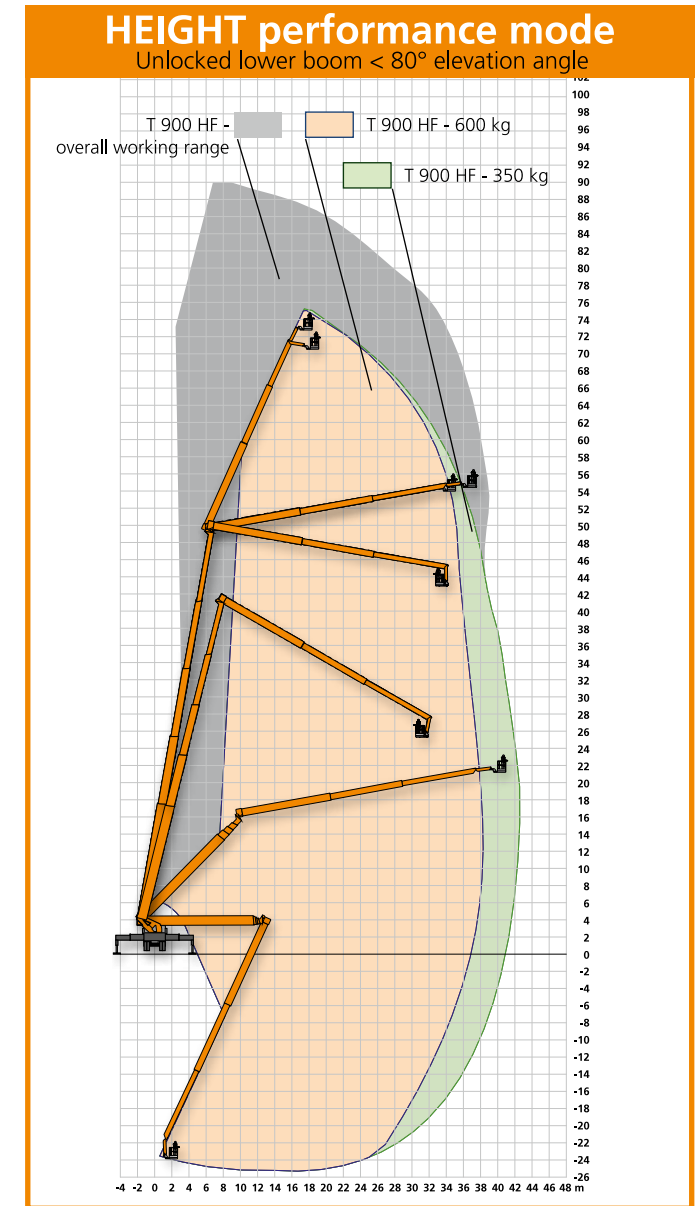
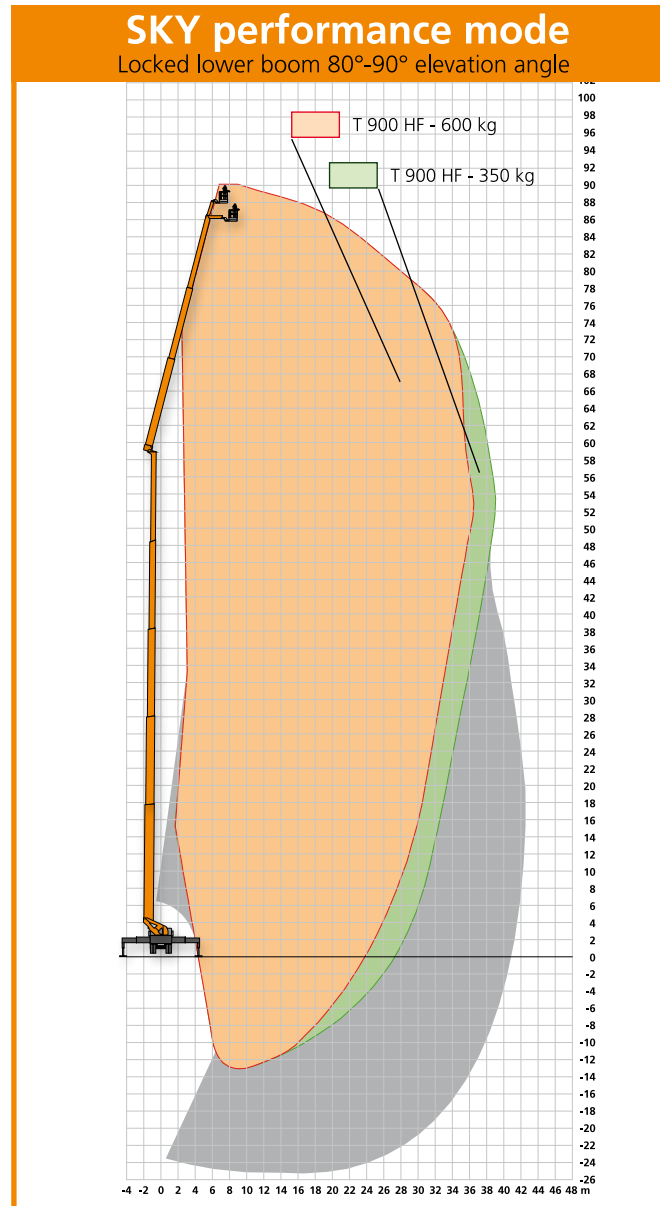
UNIQUE: World's most versatile large-scale truck-mounted aerial work platform

 **Working in HEIGHT and SKY performance mode**

Many new application possibilities with this 90-m large-scale model in the time-tested HEIGHT performance STEIGER® series.

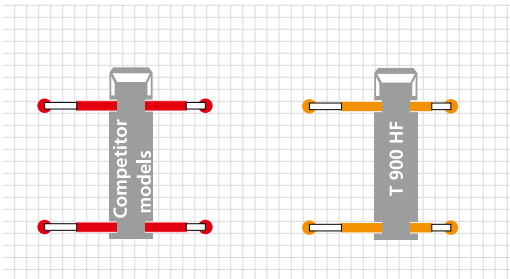
Advantages:

-  Full "up, over, and back" function for maximum versatility
-  Enhanced maneuverability and agility at the job site. Upper boom (in retracted position) is 1 m shorter than competitor models (3-section telescopic boom)
-  2-in-1 model results in increased utilization rate = higher return on investment (ROI). Short-term rental possible
-  Familiar controls for operators – similar to other STEIGER® models in the HP/HF series.



VERSATILITY - COMPETITOR MODELS VS T 900 HF

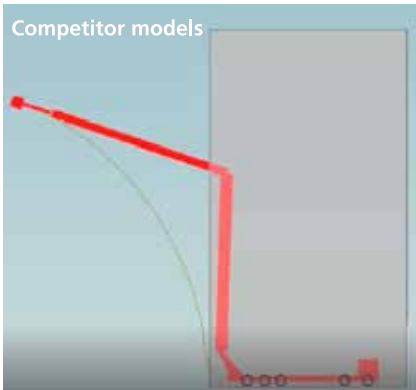
+



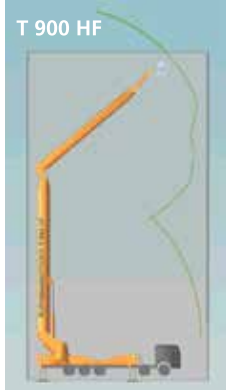
Less stabilizing required on the opposite side


+

Competitor models



T 900 HF





Link: <http://x-qr.net/1H3U>

Less set-up space required with the T 900 HF

+



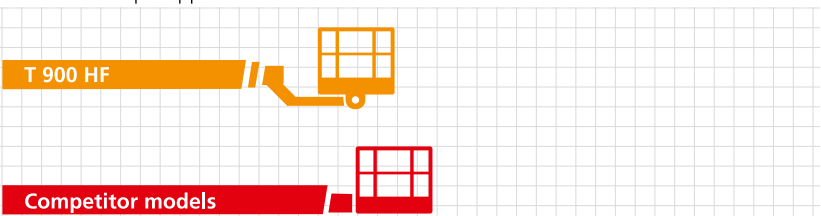

Link: <http://x-qr.net/1ESK>

Special "up, over, and back" feature on the T 900 HF

+

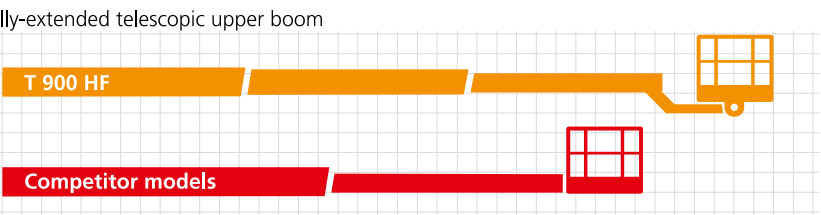
Retracted telescopic upper boom

1



Fully-extended telescopic upper boom

2

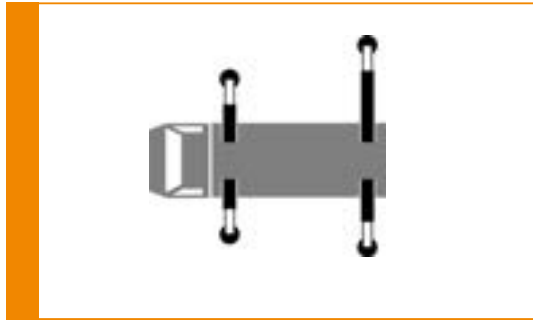


The T 900 HF with its 3-section telescopic boom compared to the 2-section boom: shorter in retracted position and higher reach capacity

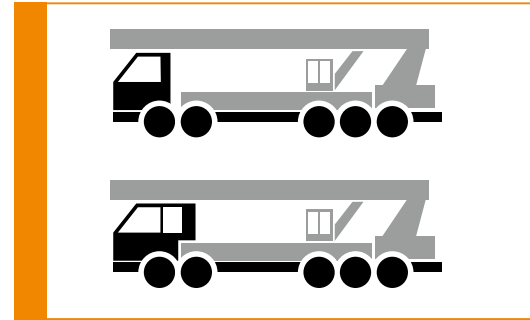


Maximizes STEIGER® performance through real-time, on-board lateral outreach calculations, based on individual STEIGER® configuration

REGARDLESS OF....



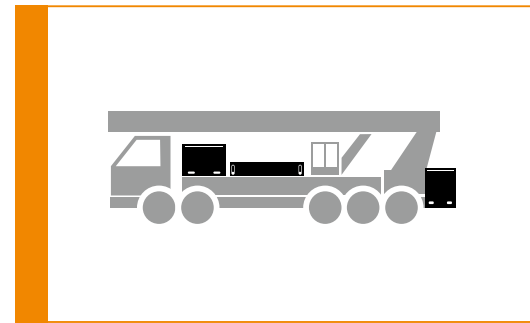
... positioning



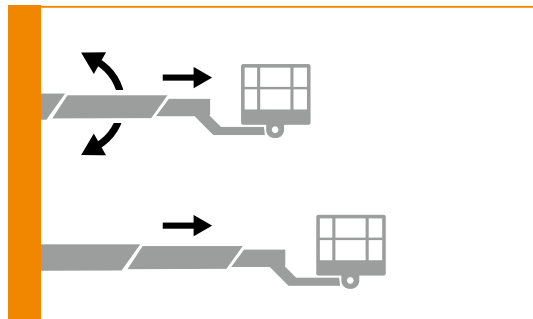
... truck make/model



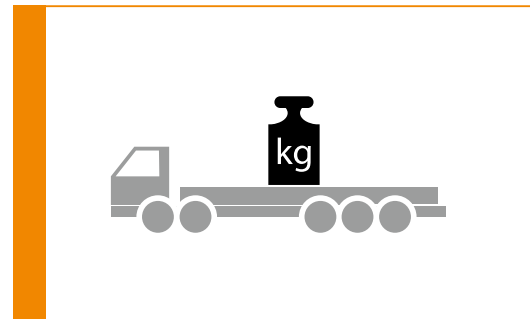
... work basket load



... special configurations/
attachments

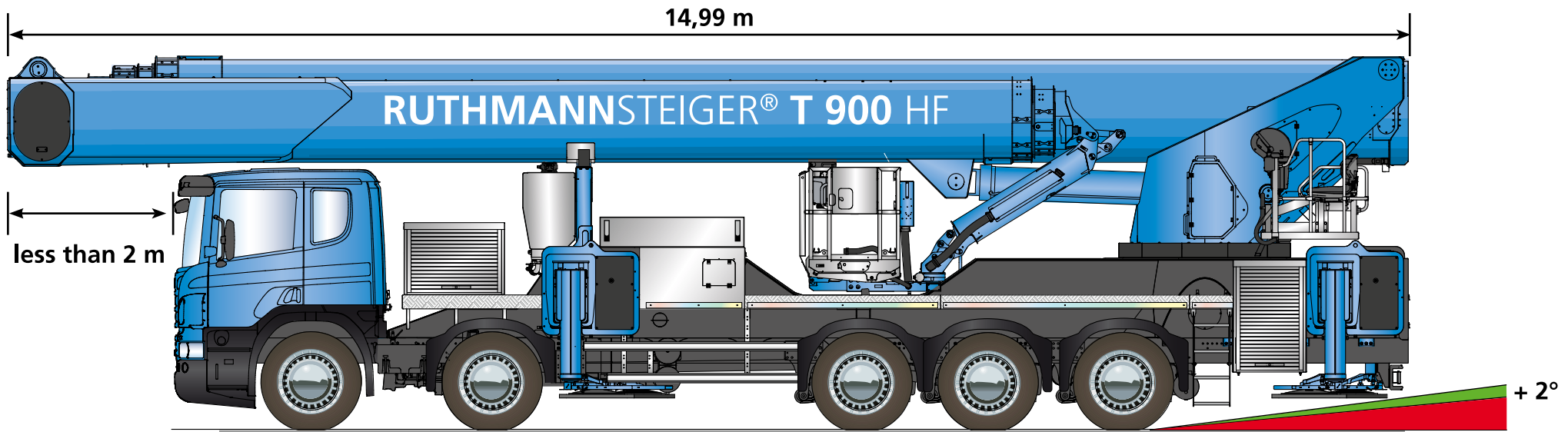


... boom position



... desired payload
capacity

PRACTICAL DIMENSIONS



THE MOST COMPACT LARGE-SCALE MODEL IN ITS CATEGORY

+ Overall vehicle length: 14,99 m
- 1 m / - 7 %

+ Front overhang: less than 2 m
- 0,5 m / - 25 %;
reduces personnel require during transport (extra person is often mandatory if the overhang is greater than 2 m)

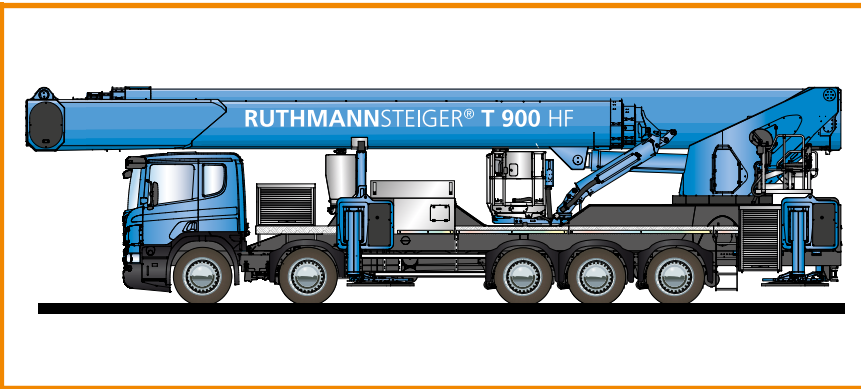
+ Easy access to work basket

+ No work basket at the rear
less risk of damage during manoeuvring

+ + 2° more rear approach/
departure angle
less risk of damage during manoeuvring besides from streets

+ approx. 3.1-m rear overhang
- 0,4 m / - 14 %

SKY performance STEIGER® T 900 HF

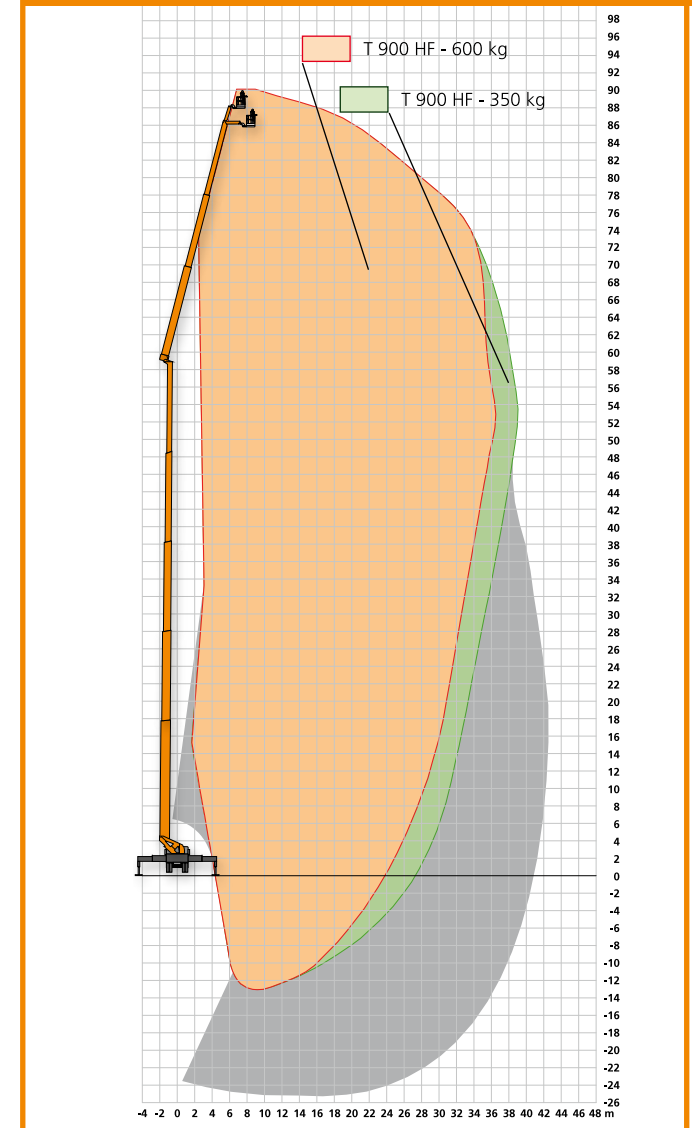


i Maximum performance on 5 axles

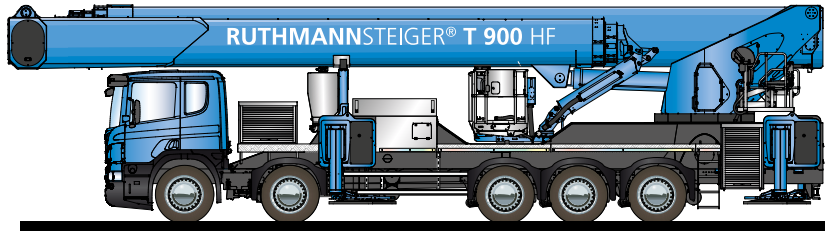
PERFORMANCE CAPABILITIES in SKY performance mode

- +** 90 m working height
- +** Lateral outreach of up to 42 m (up to 10 m more than on competitor models)
- +** Up to 9 m of additional reach capacity through flexible lower boom elevation angle (80°-90°) and increased upper-boom length
- +** 600 kg work basket load capacity (+ 70 kg more than the competition): Maximum work basket load capacity with upper boom fully extended (if upper boom at > 35° (horizontal)) and in every work basket position (also extended)
- +** Utilizing highflex technology in the time-tested HEIGHT performance STEIGER® series
- +** Lower boom electronically/automatically locked only when working at maximum working height with 80°-90° elevation angle
- +** Fully extended upper boom length of 33 m (+1 m compared to competitor models)

Working range in Sky performance mode



Depending on truck type and configuration

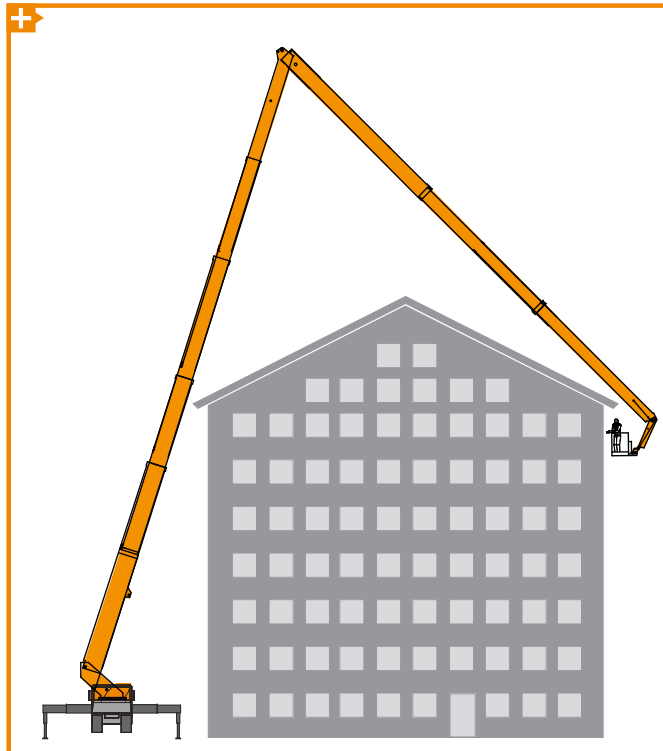


Maximum performance on 5 axles up to 90 m

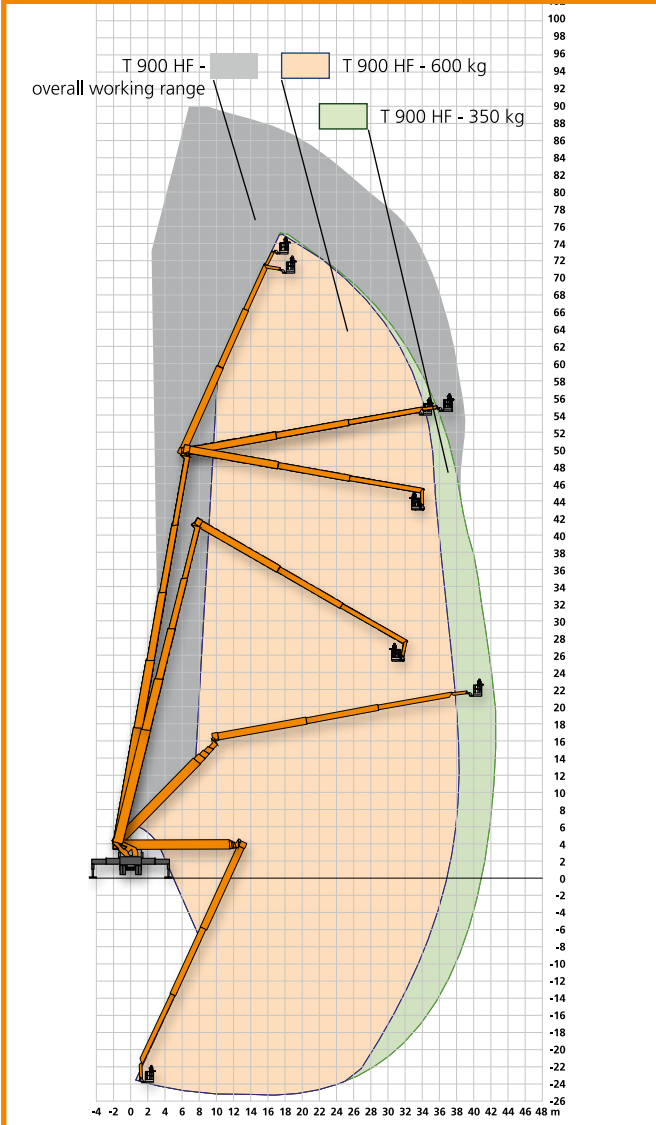
UNIQUE IN THIS CATEGORY
highflex-function "up, over and back"

PERFORMANCE CAPABILITIES in HEIGHT performance mode

- +** When maximum versatility/agility at the job site is more important than maximum working height
- +** Enhancement of **HEIGHT performance** highflex-STEIGER® series with full highflex "up, over, and back" functions
- +** Electronic/automatic locking mechanism on lower boom only when necessary (when lower boom elevation angle is $\geq 80^\circ$)
- +** 2-in-1 aerial work platform



Working range in HEIGHT performance mode





i Thanks to the same functionality, operators of other HEIGHT performance models can also operate the SKY performance STEIGER® T 900 HF after simple instructional training.

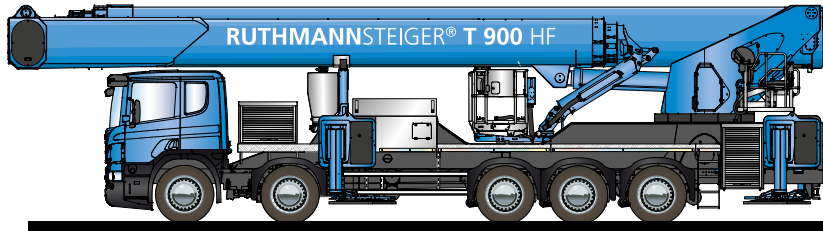


TIME-TESTED TECHNOLOGY AND FEATURES

- +** Sturdy multi-bevelled boom system made of high-tech steel
- +** 5-section lower boom
- +** 3-section upper boom can be fully extended even at 600 kg work basket capacity (upper boom > 35°)
- +** Easy handling with the same functions and operational procedures as on previous, large-scale STEIGER® models = reduced training/operating personnel costs (holiday/substitute regulations, etc.)
- +** Fully-functional control panel on the tower (optional equipment)
- +** Vehicle operating status info in work basket and/or STEIGER® operating status info in driver's cab
- +** Diverse outrigger control locations: Work basket, rear of the vehicle (left and right side) tower control panel, and alternate control
- +** Outrigger pads mounted onto support cylinders
- +** COCKPIT (control unit in work basket)
- +** Parts/components identical to other models for cost-effective service and maintenance
- +** Same control system
- +** Same driver/operator



SKY performance STEIGER® T 900 HF



i The only 90 m work platform in the world with **highflex** technology

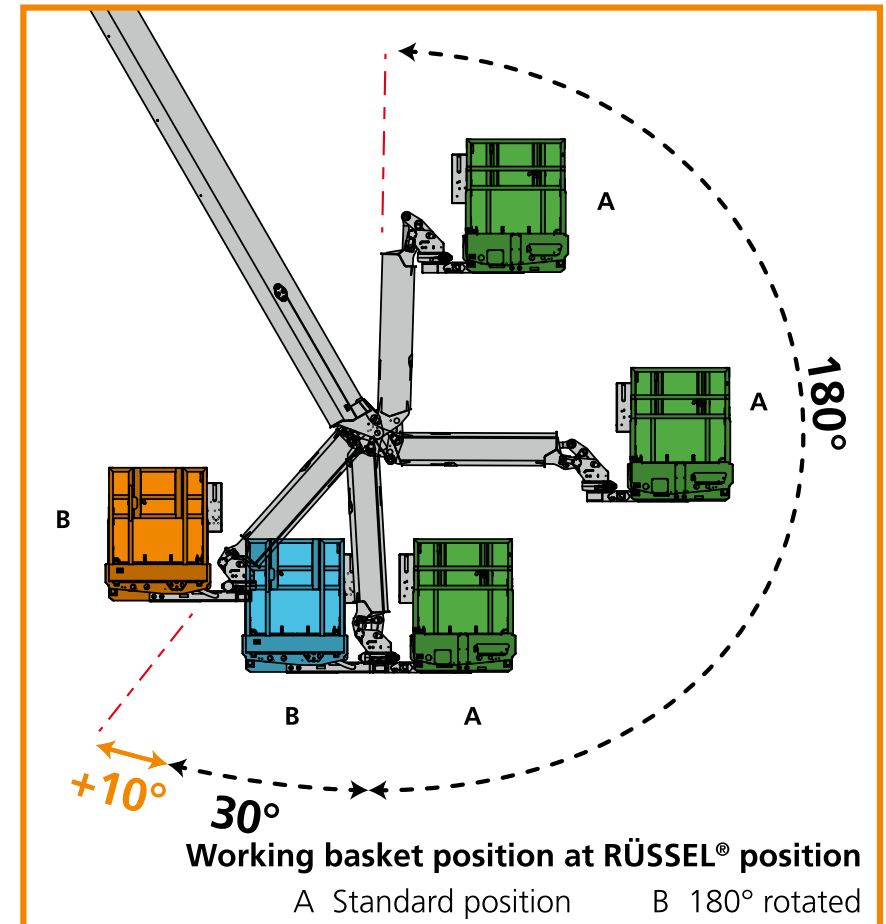
i The **highflex** jib (RÜSSEL®) provides far greater versatility at the job site







Watch our Video

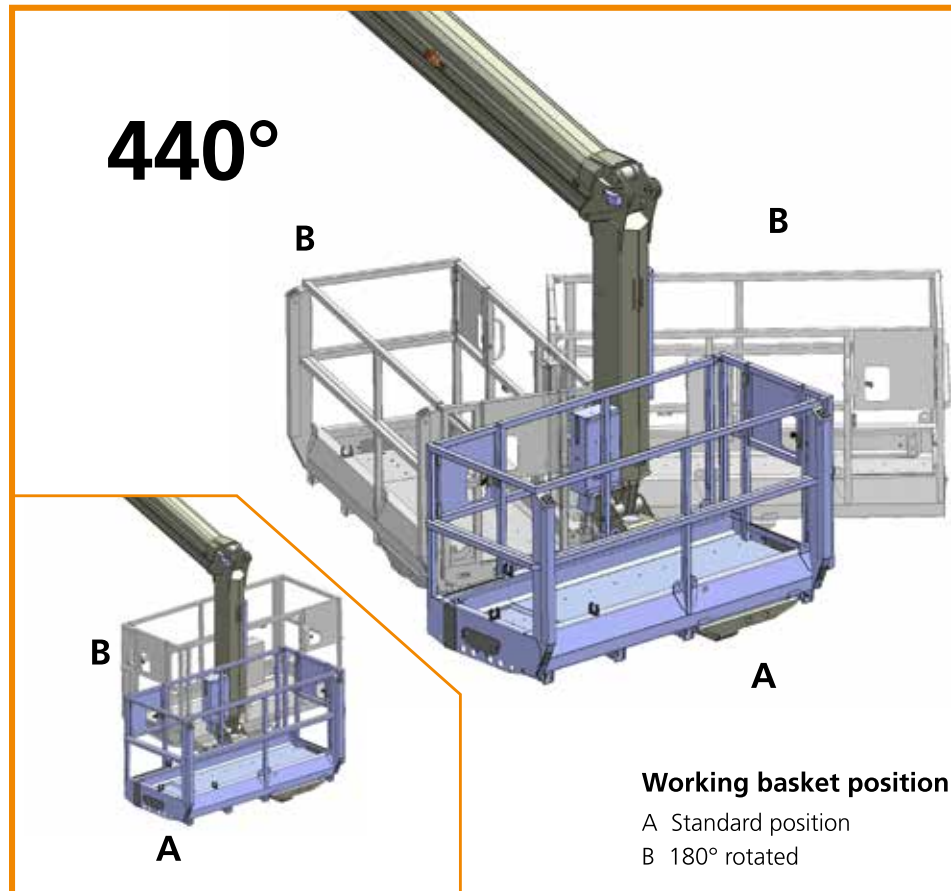
**HEIGHT PERFORMANCE TECHNOLOGY
RUTHMANN RÜSSEL®**

- +** 220 ° true angle of the RÜSSEL®'s (iib) due to optimized articulating telescopic basket
- +** 2 m RÜSSEL® - length (jib) therefore 6 m object flexibility
- +** 'Standing' working basket perfect for 'under and up' as well as all possibilities of 'up and over and back' during lowered RÜSSEL®
- +** Modular design













More flexibility in use with the highflex working basket

-  Maximum basket rotation angle
440° instead of 180°
-  2 x 220 working basket rotation
260° MORE
-  Biggest working basket available
on the market
3,82 m x 0,97 m (extended)
-  600 kg working basket load
-  Few interference factors
under working basket
-  All positions also reachable with
extended working basket



New design with even more features and optional extras



-  Stable design, strengthened floor
-  Barrier-free, heated, and illuminated work basket deck
-  New Lift-Up-System (+ 25 kg payload)
-  Camera work basket
-  PPE fall-protection anchorage points (22,2 kN) also on the extended part of the work basket
-  Material winch
-  Lighting for work basket deck
-  Adjustable folding seat
-  Additional cleaning hatches, etc.
-  Lighting equipment etc.



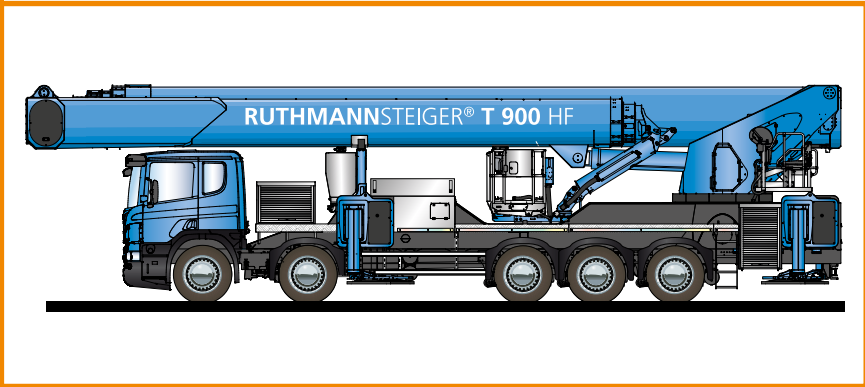
Time-tested chassis to choose from!
Maximum versatility and easy handling

VEHICLE SELECTION

- + Gross vehicle weight (GVW): 48 - 52 t
- + Axle drive: 10 x 4
- + 5-axle chassis with two steered front axles and one steered trailing axle
- + Only one driver, so front overhang < 2 m
- + Standard chassis with high operating range
- + Permit-friendly travel on European roads
- + Service available across Europe
- + Approx. length: 14,99 m
approx. height: ≤ 4 m



SKY performance STEIGER® T 900 HF



i The new **HIGHLIGHT** opens up an entirely new range of applications

"Developed from practice for practice."

- +** Developed in close collaboration with operators using big truck mounts
- +** Developed for world wide application usage due to:

DIN EN













USEFUL optional extras

Greater comfort
Greater safety
Greater efficiency

...an absolute must on
large-scale models!

JUST A FEW EXAMPLES

-  Lift-Up System on the work basket for safe and efficient lifting of heavy and bulky items
-  Storage boxes/containers to safely transport tools and materials
-  Electric generator

-  Lighting equipment on the truck, outriggers, and on/in the work basket
-  Heating systems for the COCKPIT, work basket controls, and basket deck
-  First-aid kit in work basket
-  Adjustable folding seat in work basket
-  Camera bracket for TV productions
-  Lower boom camera
-  etc.

Lighting equipment



Wind gauge



First-aid kit



Lift-Up-System



Rear-view backup camera



Tool holder

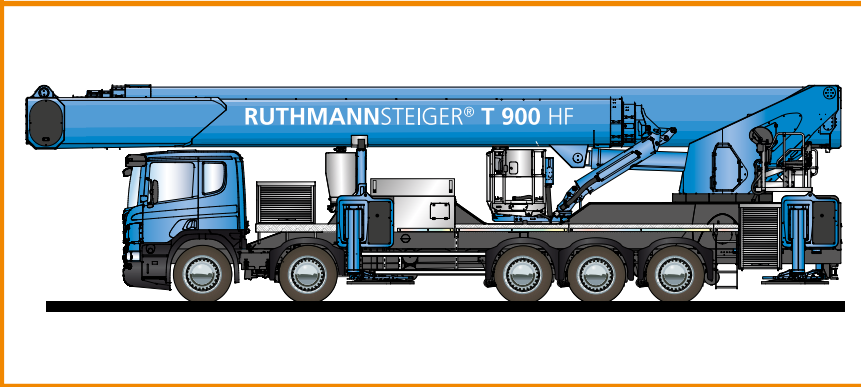


Folding seat



Additional optional equipment is available in the separate RUTHMANN feature catalogue!

SKY performance STEIGER® T 900 HF



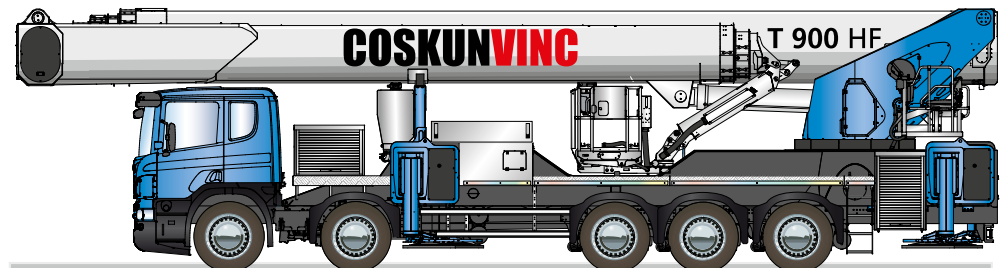
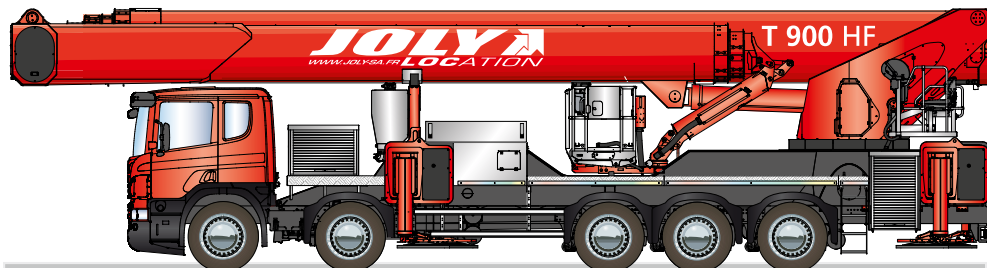
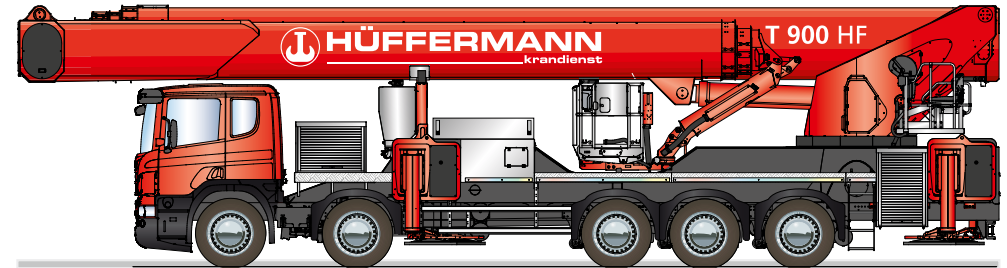
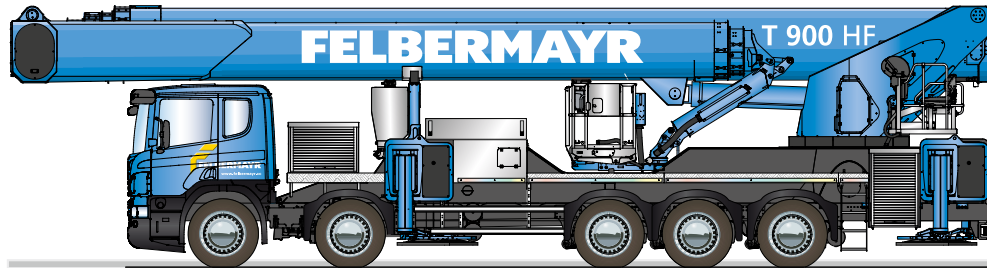
SUCCESS AT WORK

-  Many satisfied reference customers – unsurpassed in the bigger truck mount segment
-  More than 300 HEIGHT performance-units since 2012
-  Known worldwide for time-tested, state-of-the-art, large-scale equipment technology

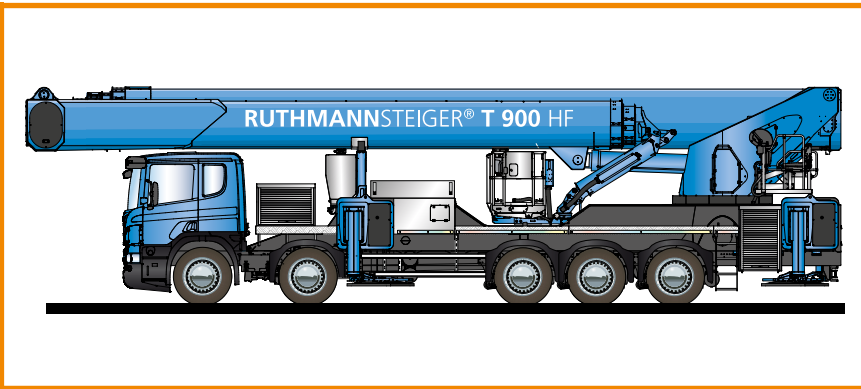


 **SKY PERFORMANCE IS CONVINCING:**

The first 4 SKY performance STEIGER® are already ordered:



SKY performance STEIGER® T 900 HF



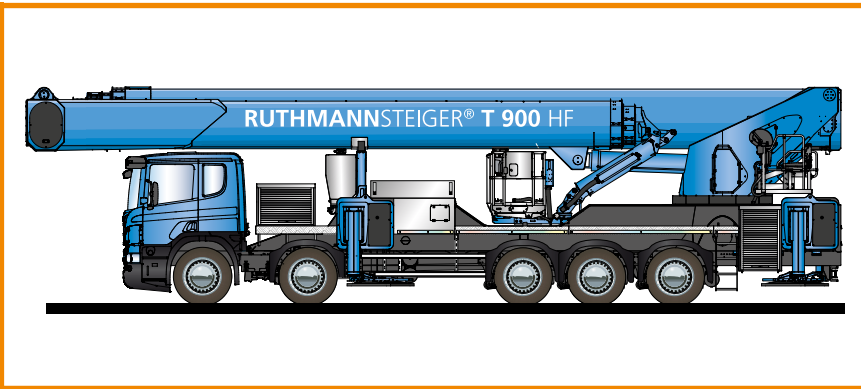
i Available worldwide: **RUTHMANNSERVICE**



- +** Unrivalled service quality & variety through company-owned customer service!
- +** Multilingual 24/7 telephone hotline support – outstanding quality
- +** Largest spare parts warehouse and fastest, worldwide delivery service. Spare parts always readily available.
- +** Highly professional, global service technicians standing by to assist you
+ New: video service
- +** Market-leading information and diagnostic system in state-of-the-art control panel (COCKPIT) for comprehensive, global remote diagnosis








SKY performance STEIGER® T 900 HF



i SALES PROMOTION SUPPORT:


In order to provide your customers with a comprehensive picture of the possibilities of your SKY performance STEIGER® (before and after delivery), we will support you with marketing material.

2D- and 3D-animation in your corporate colors and vehicle graphics for usage in:

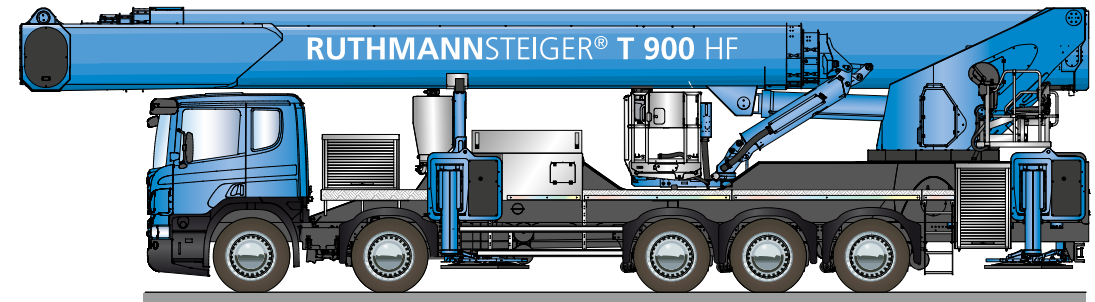
-  Advertisement in trade journal
 -  Sales folder/brochure
 -  Poster
 -  Website package (pics und texts)
- and
-  Video/motion picture



A quantum leap in the 90-m working height category

by **RUTHMANN**'s patented, state-of-the art  Dynamic Reach System (DRS) and its revolutionary "dual concept" design

SKY performance STEIGER® T 900 HF



Summary of advantages:

- 90 m working height
- Lateral reach capacity of up to 42 m – upper boom length of 33 meters!
- Patented DRS provides real-time, on-board lateral outreach calculations
- Dual concept = 2-in-1 model in SKY and HEIGHT performance mode. Many more application possibilities = higher utilization rate = increased revenue. Year-round renting.
- Fully extended telescopic upper boom even with 600 kg work basket load capacity
- highflex jib (RÜSSEL®) → 220° swiveling range
- highflex work basket → 440° rotation angle
- Mounted onto 5-axle chassis of various 48 – 52 t (GVW) trucks. Reduced logistics planning/costs (permit-friendly)
- A variety of driver's cabs – sleeper cabs also available
- Minimum orientation/training because of familiar control and operating technology (COCKPIT)
- Many standard features
- A wide variety of optional accessories to choose from
- Hundreds of national and international references (HEIGHT performance STEIGER® series)
- available worldwide **RUTHMANNSERVICE**

A **QUANTUM LEAP** in the 90-m working height category

Ruthmann GmbH & Co. KG

Von-Braun-Straße 4
48712 Gescher-Hochmoor
GERMANY

Phone: +49 2863 204-0
Fax: +49 2863 204-212

Internet: www.ruthmann.de
E-mail: info@ruthmann.de